



Yr 7 HOME LEARNING

Subject: Maths

Time: 50 minutes approx.

Learning Objective: I can find number bonds to 10/20

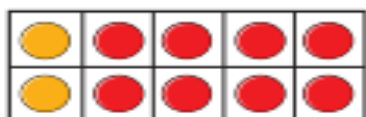
The answers to the questions are included at the bottom. We would like the students to self-mark their work. This is a very valuable learning tool as it gives pupils immediate feedback and encourages independence and ownership over their learning. Please send your work in when you have marked it, showing any corrections that you have made.

Task 1: (Miss Mendez)

Number bonds to 10

Watch the video 'Number bonds to 10' on the following link <https://vimeo.com/463894279>
Try the examples while you are watching and complete the questions below when asked to.

1 Match the ten frames to the number sentences.



$$3 + 7 = 10$$



$$6 + 4 = 10$$



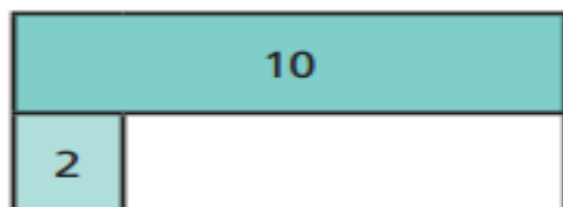
$$2 + 8 = 10$$



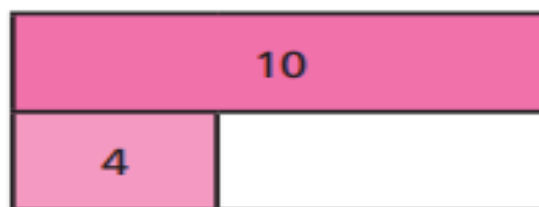
$$5 + 5 = 10$$

2 Complete the bar models.

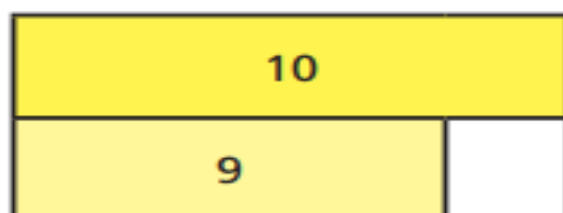
a)



c)



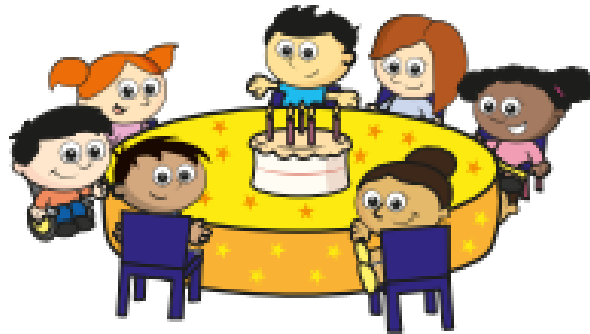
b)



d)



3 10 children can sit at this table.

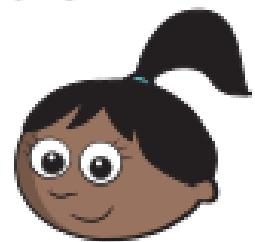


How many more children can sit down?

more children can sit down.

4 Sam and Mo have 10 sweets between them.

Sam has 4 sweets.



How many sweets does Mo have?

Mo has sweets.

5 Take 10 cubes.

Give some to your friend.

How many cubes could you each have?

Task 2:

Number bonds to 20

Play the game 'Hit the button' on the following link <https://www.topmarks.co.uk/mathsgames/hit-the-button>. How many number bonds can you find in the time given? Play the game again. Can you beat your first score?

Hit the Button

Number Bonds
Doubles
Halves
Times Tables
Division Facts
Square Numbers

Topmarks

Home **Number Bonds**

Up to 10

- ▶ Make 10
- ▶ Addition within 10
- ▶ Missing Numbers (+ and -)

Up to 20

- ▶ **Make 20**
- ▶ Addition within 20
- ▶ Subtraction within 20
- ▶ U + U + U

Up to 100

- ▶ Make 100 (tens)
- ▶ Make 100
- ▶ Addition within 100 (tens)
- ▶ Subtraction within 100 (tens)

Decimals

- ▶ Make 1 (1 dp)
- ▶ Make 10 (1 dp)

Topmarks

Task 3:

Complete the worksheet below.

The baby penguin has lost his mum! Help him find a way through the ice by following the number bonds to 20 trail. His mum is waiting for him!

5 and 15 9 and 11 1 and 20 14 and 5 5 and 16 9 and 12 11 and 8 3 and 18

12 and 8 13 and 6 17 and 4 19 and 2 17 and 4 2 and 17 16 and 3 6 and 13



10 and 11 15 and 6 1 and 19 13 and 8 13 and 8 7 and 14 18 and 3

4 and 15 10 and 11 6 and 14 2 and 19 10 and 9 6 and 13

16 and 4 11 and 9 2 and 18 11 and 10 9 and 12 5 and 16 14 and 7 16 and 3 3 and 16

12 and 8 13 and 6 1 and 20 17 and 4 7 and 12 15 and 6 12 and 9 8 and 13

4 and 16 17 and 3 8 and 12 10 and 10 3 and 17 14 and 6 7 and 13 15 and 5



Save your work:

If you are using a computer, open a blank document to do your work (you can use Word or Publisher). Don't forget to SAVE it with your name, the lesson you are doing and the date.

For example: T.Smith Maths 8 April

If you would like us to see or mark your work please email it or send a photo of your completed work to:

smendez.305@glebe.bromley.sch.uk

Thank you

Answers:

Task 1:

1	
2	<p>a) </p> <p>b) </p> <p>c) </p> <p>d) </p>
3	3 more children can sit down.
4	Mo has 6 sweets.
5	any two numbers that total 10

Task 3:

The baby penguin has lost his mum! Help him find a way through the ice by following the number bonds to 20 trail.

His mum is waiting for him!