

ENGLISH Set V

Curriculum Map: Year 11

Please note that the order of the texts may change, depending on the needs of students.

OCR Entry Level English Specification
<https://ocr.org.uk/Images/313157-specification-entry-level-english-r393.pdf>

AUTUMN TERM

At the start of the year, students will complete a reading assessment using 'Star Reading'.



Writing: Informative Writing
 Students produce an informative piece of writing. This could take a variety of forms, including:

- A letter
- An advertisement
- A personal statement
- A review or opinion piece

Reading: understanding a non-fiction text
 Students respond to questions on a non-fiction text and show some understanding of the information and ideas presented.



Entry Level Coursework



Book Study: A Christmas Carol



Reading: understanding a literary text
 Students respond to questions on a literary text and show some understanding of the information and ideas presented.



Students will write a character description, describe a picture and describe how a character changes throughout the story.

SPRING TERM

Once per term, students will complete a reading assessment using 'Star Reading'.



Writing: Imaginative Writing
 Students produce an imaginative piece of writing. This could take a variety of forms, including:

- A short story or narrative
- The opening of a story
- A character description
- A setting description



Spoken Language
 Students participate in a discussion or role-play activity with the class teacher.
 Discussions are based around learner's interests.
 Role-plays can include practical or imaginary scenarios.



SUMMER TERM

Once per term, students will complete a reading assessment using 'Star Reading'.



Book Study: Welcome to Trash Land



Students will write a setting description, and retell part of the story.



ENGLISH Set W

Curriculum Map: Year 11

Please note that the order of the texts may change, depending on the needs of students.

OCR Entry Level English Specification
<https://ocr.org.uk/Images/313157-specification-entry-level-english-r393.pdf>



Reading: understanding a literary text
 Students respond to questions on a literary text and show some understanding of the information and ideas presented.

Students will write a character description, describe a picture and describe how a character changes throughout the story.



AUTUMN TERM

At the start of the year, students will complete a reading assessment using 'Star Reading'.



Writing: Informative Writing
 Students produce an informative piece of writing. This could take a variety of forms, including:



- A letter
- An advertisement
- A personal statement
- A review or opinion piece

Reading: understanding a non-fiction text
 Students respond to questions on a non-fiction text and show some understanding of the information and ideas presented.



Entry Level Coursework



Book Study: A Christmas Carol



Once per term, students will complete a reading assessment using 'Star Reading'.



SPRING TERM

Writing: Imaginative Writing
 Students produce an imaginative piece of writing. This could take a variety of forms, including:



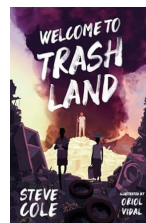
- A short story or narrative
- The opening of a story
- A character description
- A setting description

Spoken Language
 Students participate in a discussion or role-play activity with the class teacher.
 Discussions are based around learner's interests.
 Role-plays can include practical or imaginary scenarios.



SUMMER TERM

Once per term, students will complete a reading assessment using 'Star Reading'.



Book Study: Welcome to Trash Land



Students will write a setting description, and retell part of the story.



ENGLISH Set X

Curriculum Map: Year 11

Please note that the order of the texts may change, depending on the needs of students.

OCR Entry Level English Specification
<https://ocr.org.uk/Images/313157-specification-entry-level-english-r393.pdf>



ENGLISH Set Y

Curriculum Map: Year 11

Please note that the order of the texts may change, depending on the needs of students.

OCR Entry Level English Specification
<https://ocr.org.uk/Images/313157-specification-entry-level-english-r393.pdf>



ENGLISH Set Z

Curriculum Map: Year 11



Please note that the order of the texts may change, depending on the needs of students.



Entry Level English Coursework

AQA GCSE English Language Specification

<https://filestore.aqa.org.uk/resources/english/specifications/AQA-8700-SP-2015.PDF>

OCR Entry Level English Specification

<https://ocr.org.uk/images/313157-specification-entry-level-english-r393.pdf>

AUTUMN TERM

At the start of the year, students will complete a reading assessment using 'Star Reading'.



Students will complete two pieces of Entry Level English writing coursework:

- Informative writing
- Imaginative writing



Students will complete two pieces of Entry Level English reading coursework:

- Understanding a non-fiction text
- Understanding a literary text



GCSE English Language Mock Exam

Students will sit a mock exam for the two GCSE English Language papers.



SPRING TERM

Reading Comprehension and Analysis

In revision sessions, students will identify key ideas, analyse language and structure, compare texts, and summarise texts (AO1, AO2, AO3, AO4).



GCSE English Language Exam Preparation

Entry Level English: Spoken Language
Learners participate in a discussion or role-play activity with the class teacher.
Discussions are based around learner's interests.
Role-plays can include practical or imaginary scenarios.



Once per term, students will complete a reading assessment using 'Star Reading'.



SUMMER TERM

Argumentative and Persuasive Writing

In revision sessions, students will develop skills in writing persuasive arguments, using evidence, and checking spelling and grammar (AO5, AO6).



Creative and Descriptive Writing
In revision sessions, students will develop skills in narrative and descriptive writing, spelling, punctuation and grammar (AO5, AO6).



Entry Level English Coursework

GCSE English Language Exam Preparation



Exam Preparation
In revision sessions, students will develop skills in planning essays, managing their time, drafting and editing.



GCSE English Language Final Exams

Students will sit final exams for the two GCSE English Language papers.

