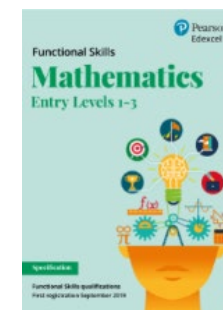
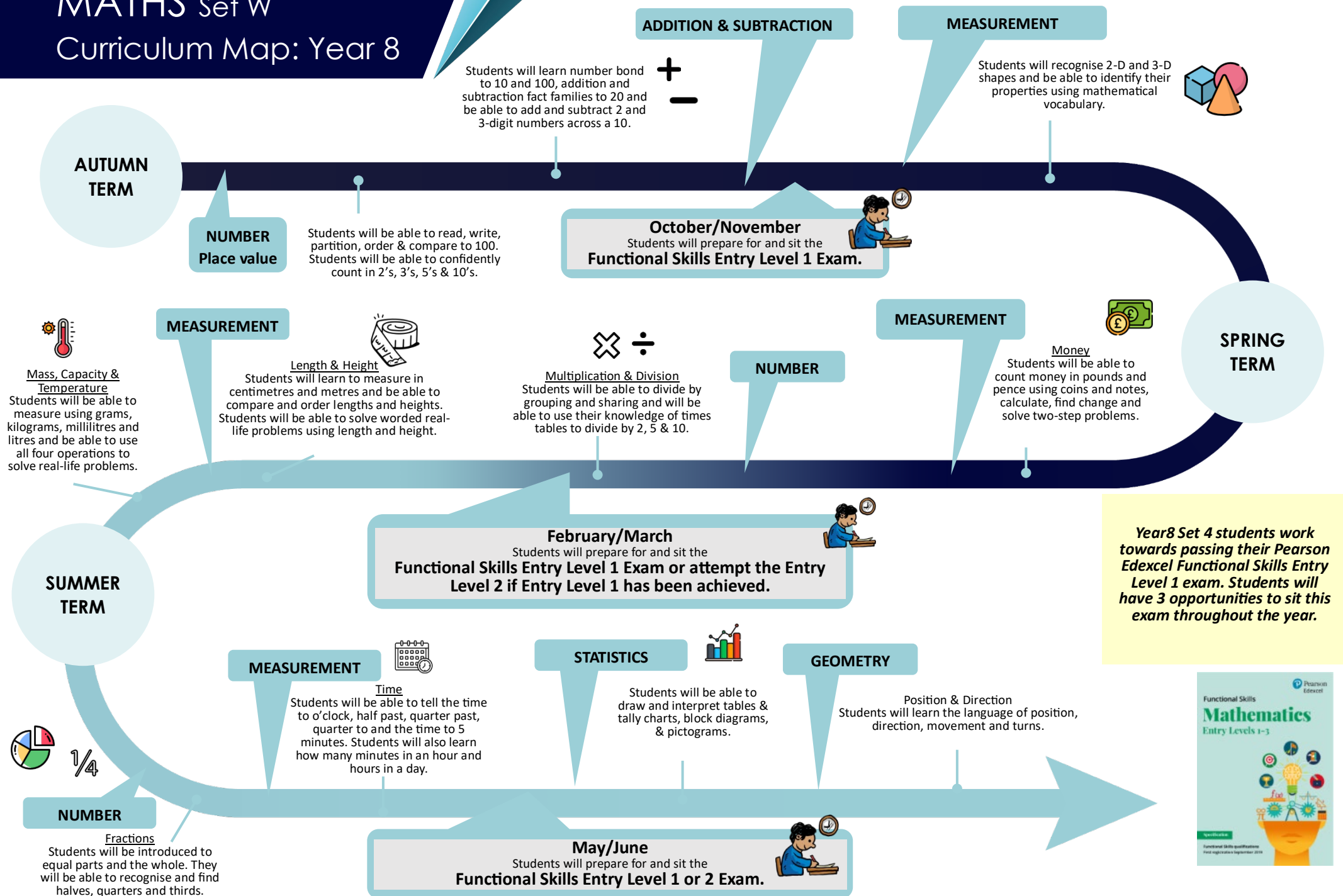


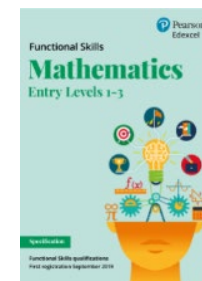
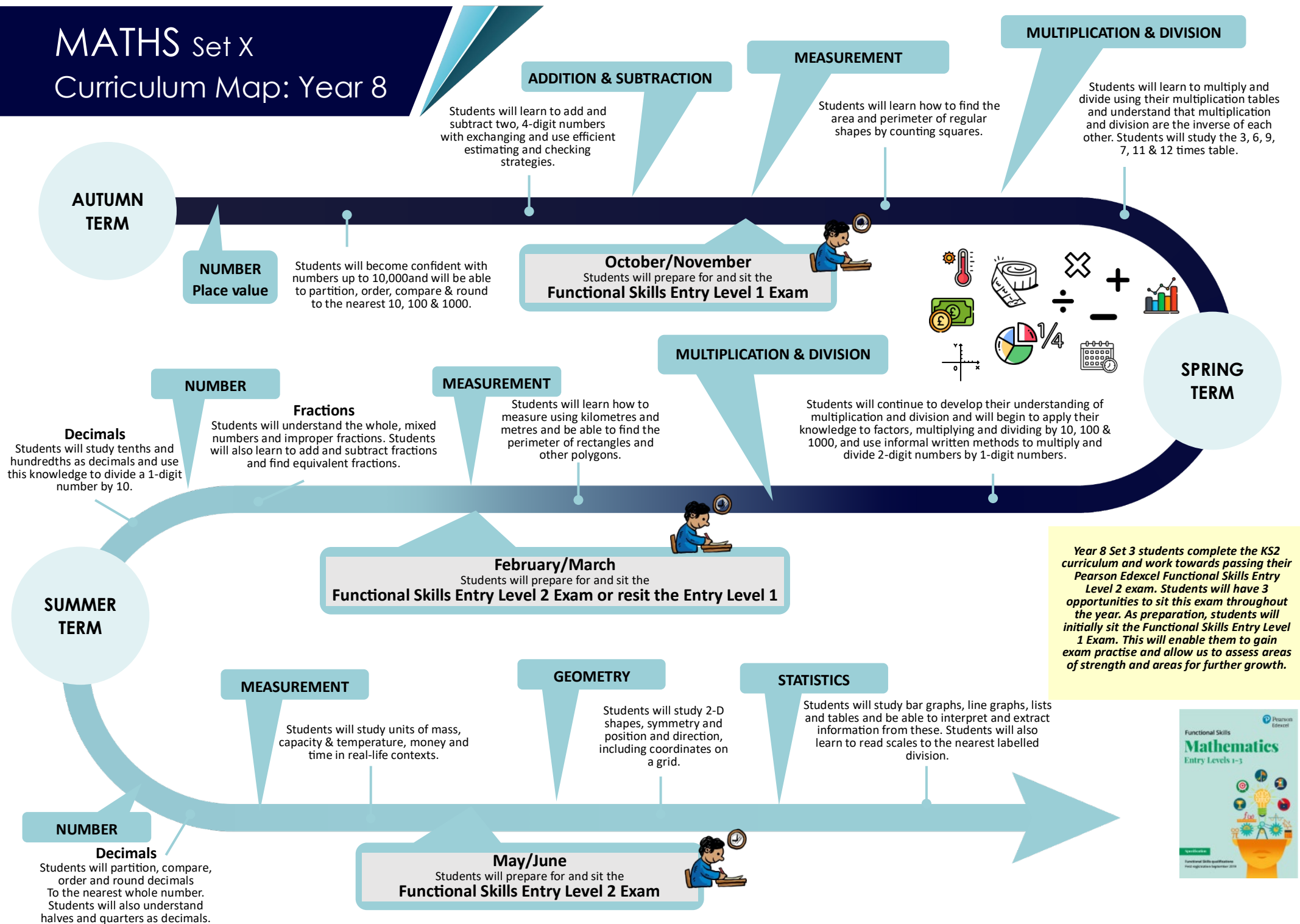
MATHS Set W

Curriculum Map: Year 8



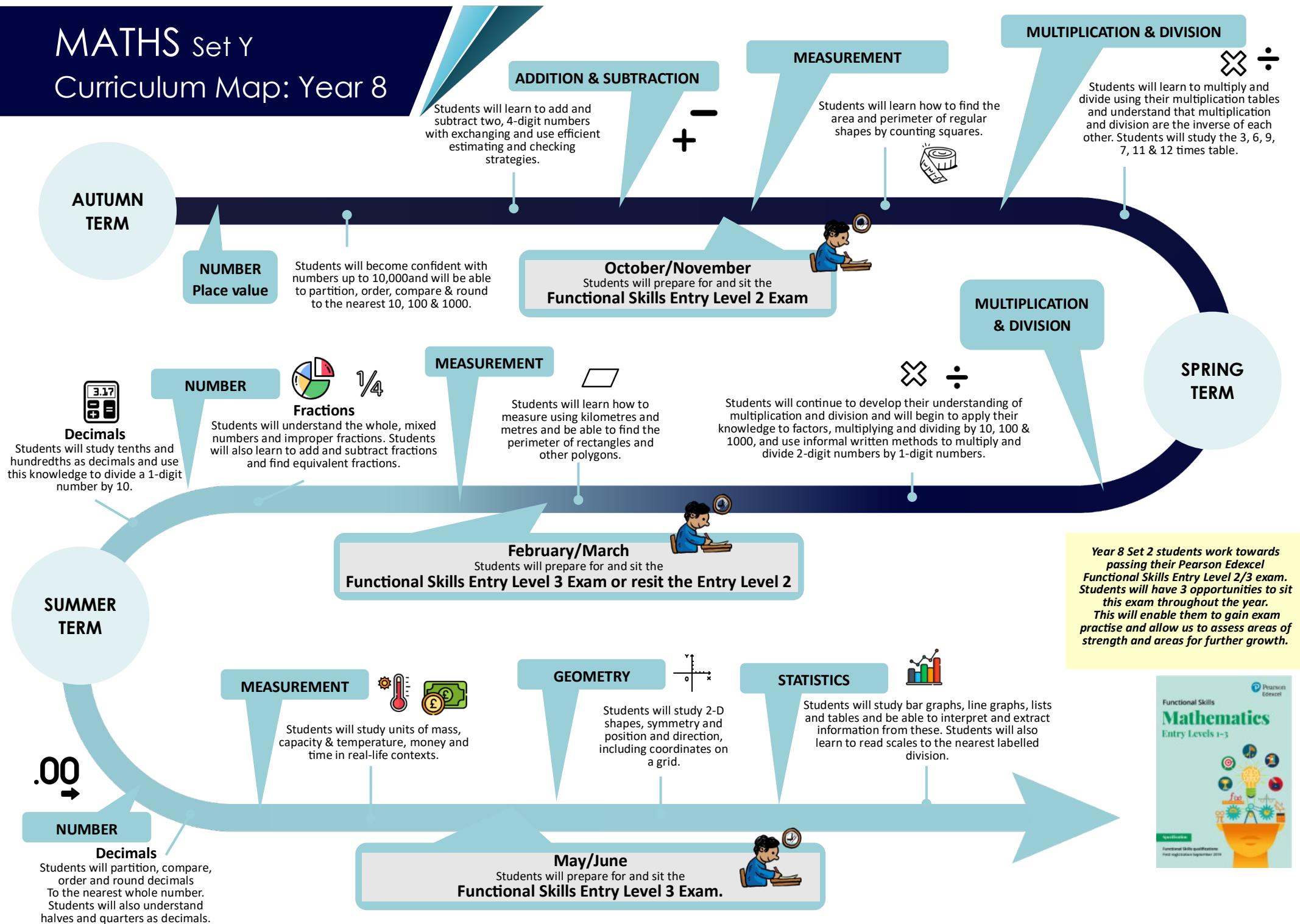
MATHS Set X

Curriculum Map: Year 8



MATHS Set Y

Curriculum Map: Year 8



MATHS Set Z

Curriculum Map: Year 8

$$\times \div - +$$

Addition, Subtraction, Multiplication & Division
Students will use all four operations to solve real-life worded problems. Students will study factors, multiples, primes, squares, cubes and roots and be able to apply this knowledge when solving BIDMAS problems.

Fractions
Students will be able to add, subtract, multiply and divide fractions and apply this to real-life worded problems.



NUMBER

Place Value
Students will become confident with positive and negative numbers to 10,000,000, finding powers of 10 and rounding.

AUTUMN TERM

October/November
Students will prepare for and sit the **Functional Skills Entry Level 1 Exam.**

STATISTICS

Students will read and interpret & extract information from line graphs, bar charts and pie charts. Students will also study mean averages.

SPRING TERM

FRACTIONS, DECIMALS & PERCENTAGES



Students will study place value within 1 and be able to multiply and divide integers and decimals by 10, 100 & 1000.

DECIMALS

Students will study fraction, decimal & percentage equivalents and be able to solve multi-step word problems.

$$(x + y)^2$$

Students will solve problems with function machines, formulae, equations and unknowns.

ALGEBRA

RATIO

Students will begin to understand ratios and make accurate decisions relating to ratios (add or multiply?) and solve real-life worded problems, including recipes.

$$3:4$$

MEASUREMENT



Students will study area and perimeter of triangles and parallelograms.

SUMMER TERM

MEASUREMENT

Students will learn to convert units including kilograms and grams, kilometres and metres, millimetres and metres and millilitres and litres. Students will study units of time and be able to read the time from an analogue & digital clock, read clocks in 24 hour format and be able to calculate using timetables. Students will also embed their skills using money and decimal notation, expressing money correctly in writing pounds and pence.



GEOMETRY

Students will learn to measure and classify angles in triangles, quadrilaterals and other polygons and be able to draw shapes and nets accurately.



NUMBER

Decimals

Students will use known number facts to add, subtract, multiply and divide decimals using efficient strategies across 1.

May/June
Students will prepare for and sit the **Functional Skills Entry Level 3 Exam**

Year 8 Set 1 students complete the KS3 curriculum and begin studying topics that will help prepare for their GCSE exam in Year 11.

Students will also be working towards passing their Pearson Edexcel Functional Skills Entry Level 3 exam.

