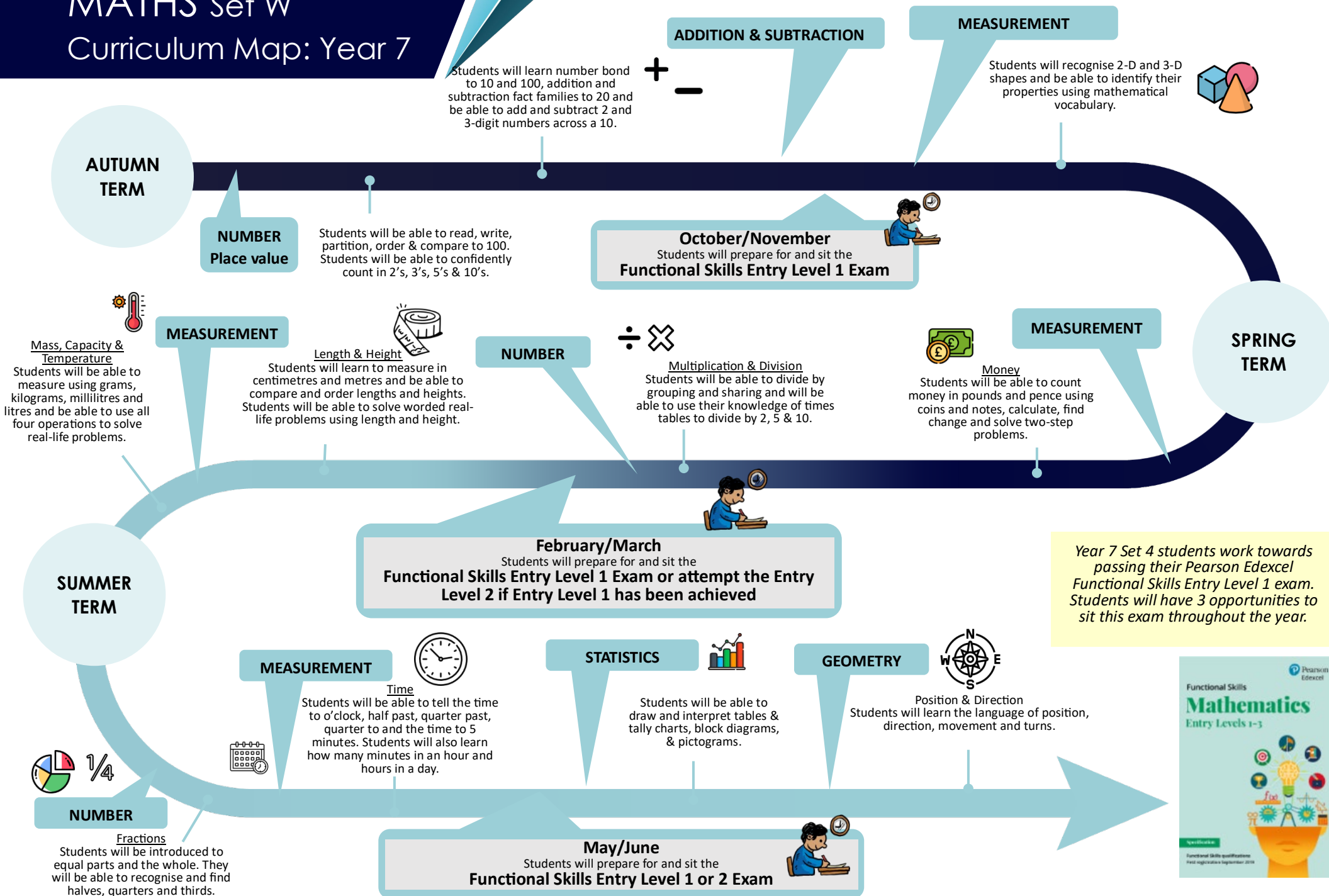


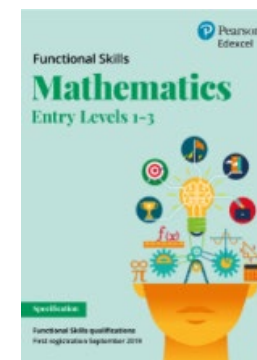
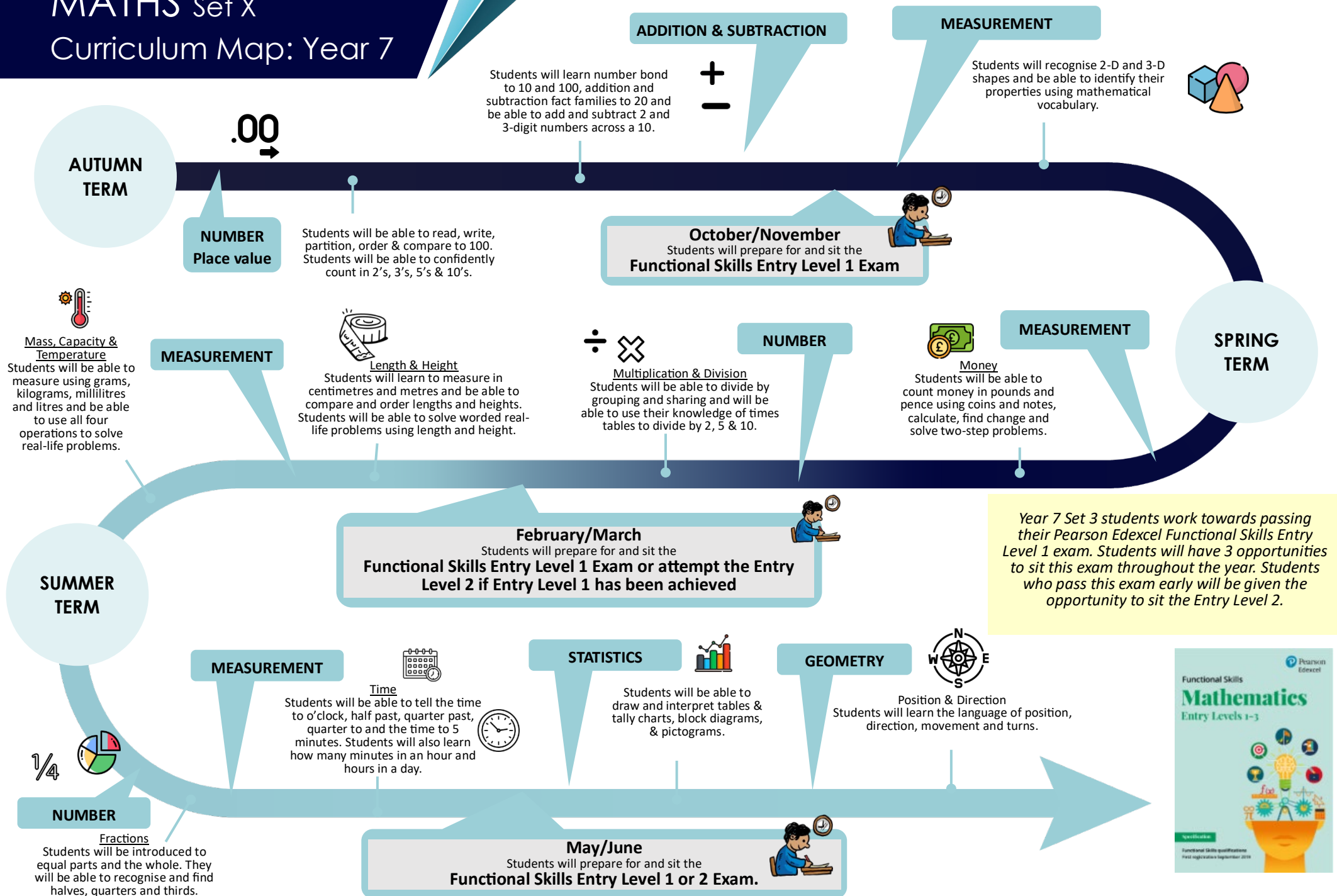
MATHS Set w

Curriculum Map: Year 7



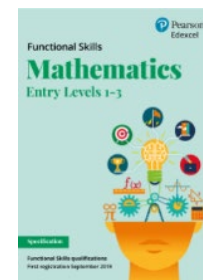
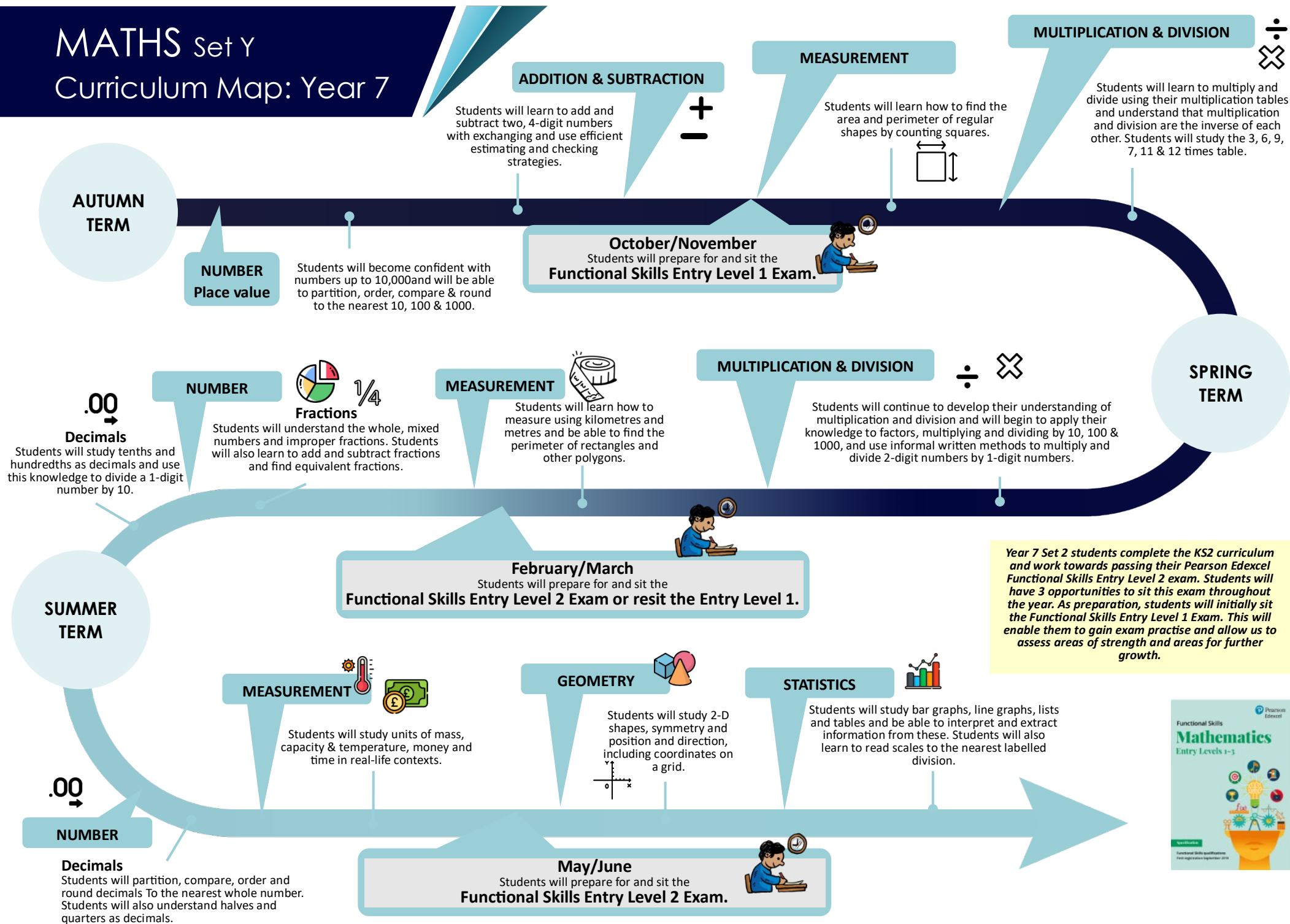
MATHS Set X

Curriculum Map: Year 7



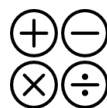
MATHS Set Y

Curriculum Map: Year 7



MATHS Set Z

Curriculum Map: Year 7



NUMBER
Addition, Subtraction,
Multiplication & Division.

- Students will study:
- Factors, multiples & primes
 - Square and cube numbers
 - Solve multi-step problems with all four operations
 - BIDMAS
 - Mental calculations and estimation
 - Reason from known facts

NUMBER
Fractions



- Students will study:
- Equivalent fractions and simplifying
 - Add and subtract any two fractions
 - Add & subtract mixed numbers
 - Multiply & divide fractions
 - Fraction of an amount
 - Read, write and understand thirds, quarters, fifths and tenths, including equivalent forms

AUTUMN TERM

NUMBER
Place Value



- Students will study:
- Numbers to 10,000,000
 - Powers of 10
 - Compare and order any integers
 - Round any integer
 - Negative numbers

October/November
Students will prepare for and sit the
Functional Skills Entry Level 1 Exam



SPRING TERM

STATISTICS

- Line graphs
- Dual bar charts
- Read and interpret pie charts
- Pie charts with percentages
- Draw pie charts
- The mean

FRACTIONS, DECIMALS & PERCENTAGES



- Equivalents
- Percentage of an amount problems
- Fractions as division

DECIMALS



- Place value
- Rounding
- Add, Subtract, Multiply & Divide by integers
- Multiply & Divide by 10, 100 & 1000
- Multiply & Divide decimals in context.

ALGEBRA



- Function machines
- Form expressions
- Substitution
- Formulae
- Form equations
- Solve 2-step equations
- Find pairs of values
- Solve problems with two unknowns

RATIO



- Add or multiply?
- Ratio and fractions
- Scale drawings
- Scale factors
- Similar shapes
- Ratio problems
- Proportion problems
- Recipes

MEASUREMENT



Students will learn how to measure angles.

February/March
Students will prepare for and sit the
Functional Skills Entry Level 2 Exam or resit the Entry Level 1



Year 7 Set 1 students complete the KS3 curriculum and begin studying topics that will help prepare for their GCSE exam in Year 11.

Students will also be working towards passing their Pearson Edexcel Functional Skills Entry Level 3 exam.

NUMBER
Fractions



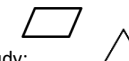
- Students will study:
- Negative numbers
 - Fraction of a number
 - Ratio
 - Decimals

MEASUREMENT



- Students will study:
- Conversion of metric units
 - Use and conversion of money

GEOMETRY



- Students will study:
- Perimeter and area of shapes
 - Angles
 - Nest of shapes
 - Angles in shapes

SUMMER TERM

May/June
Students will prepare for and sit the
Functional Skills Entry Level 3 Exam

