

MATHS Set V

Curriculum Map: Year 10

HTU
354

AUTUMN TERM

NUMBER
Place value

Students will be able to read, write, partition, order & compare to 100. Students will be able to confidently count in 2's, 3's, 5's & 10's.

ADDITION & SUBTRACTION

Students will learn number bond to 10 and 100, addition and subtraction fact families to 20 and be able to add and subtract 2 and 3-digit numbers across a 10.

+

-

MEASUREMENT

Students will recognise 2-D and 3-D shapes and be able to identify their properties using mathematical vocabulary.



October/November
Students will prepare for and sit the **Functional Skills Entry Level 1 Exam**



MEASUREMENT



Mass, Capacity & Temperature
Students will be able to measure using grams, kilograms, millilitres and litres and be able to use all four operations to solve real-life problems.



Length & Height
Students will learn to measure in centimetres and metres and be able to compare and order lengths and heights. Students will be able to solve worded real-life problems using length and height.

NUMBER

÷

×

Multiplication & Division
Students will be able to divide by grouping and sharing and will be able to use their knowledge of times tables to divide by 2, 5 & 10.



MEASUREMENT

Money
Students will be able to count money in pounds and pence using coins and notes, calculate, find change and solve two-step problems.

SPRING TERM

SUMMER TERM

February/March
Students will prepare for and sit the **Functional Skills Entry Level 1 Exam or attempt the Entry Level 2 if Entry Level 1 has been achieved**



MEASUREMENT



Time
Students will be able to tell the time to o'clock, half past, quarter past, quarter to and the time to 5 minutes. Students will also learn how many minutes in an hour and hours in a day.

STATISTICS



Students will be able to draw and interpret tables & tally charts, block diagrams, & pictograms.

GEOMETRY



Position & Direction
Students will learn the language of position, direction, movement and turns.



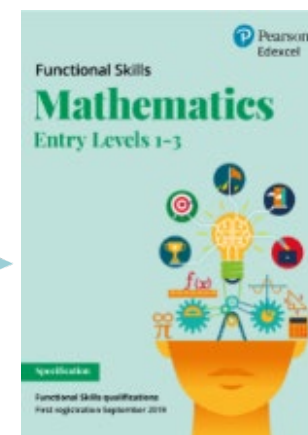
NUMBER

Fractions
Students will be introduced to equal parts and the whole. They will be able to recognise and find halves, quarters and thirds.

May/June
Students will prepare for and sit the **Functional Skills Entry Level 1 or 2 Exam**

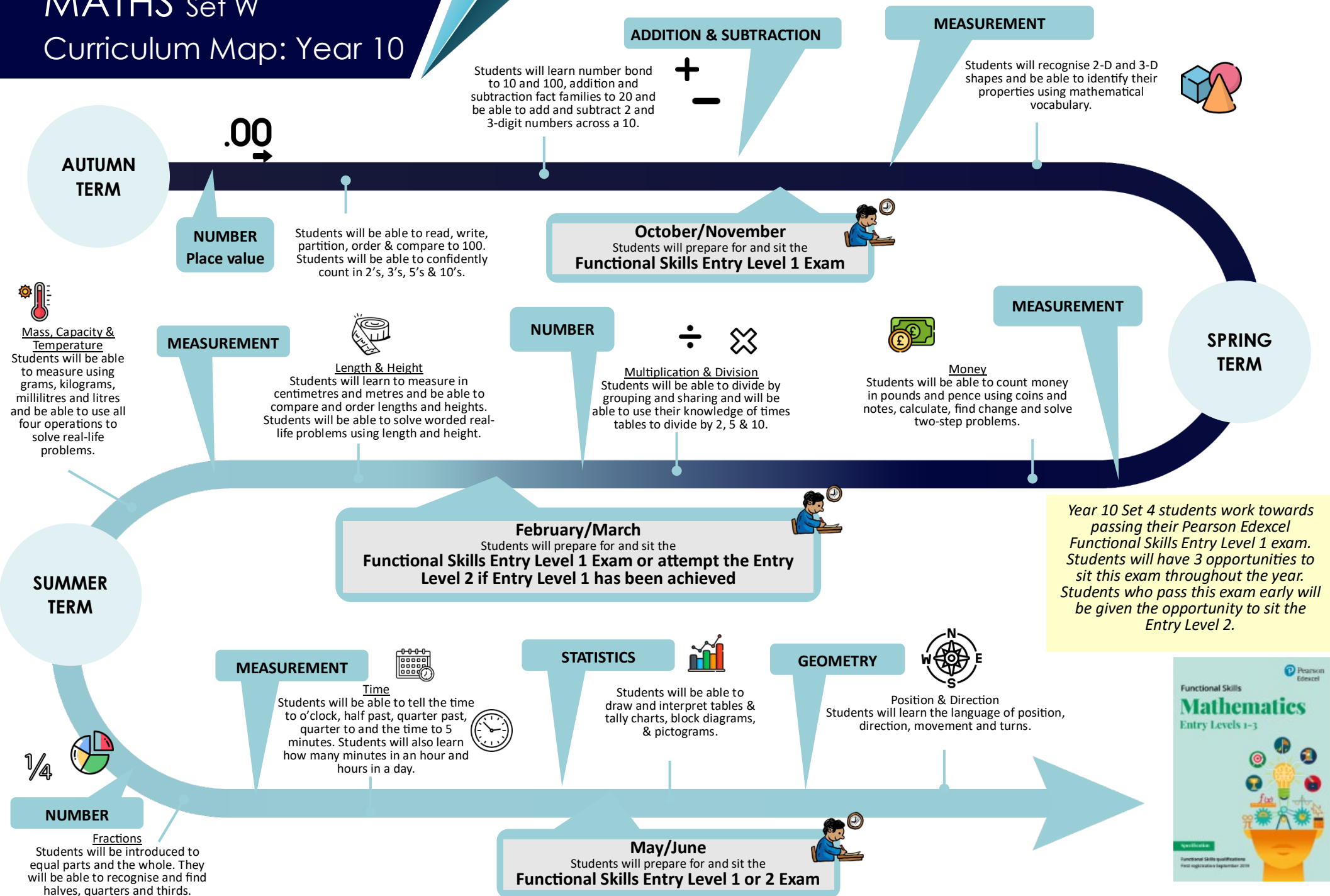


Year 10 Set 5 students work towards passing their Pearson Edexcel Functional Skills Entry Level 1 exam. Students will have 3 opportunities to sit this exam throughout the year.



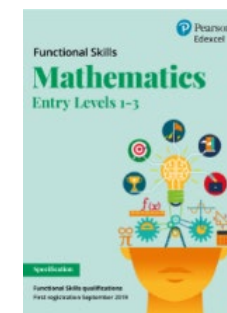
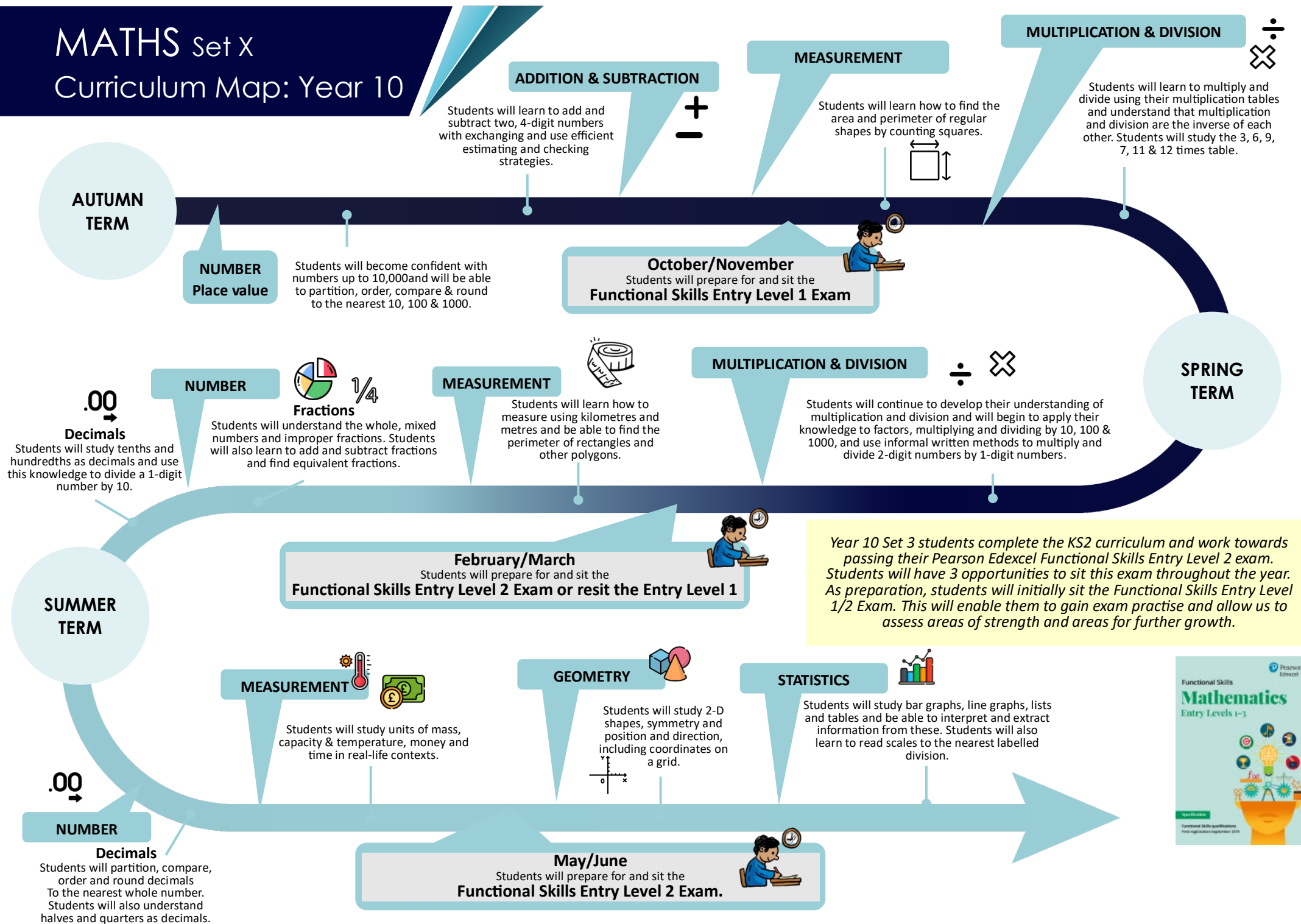
MATHS Set W

Curriculum Map: Year 10



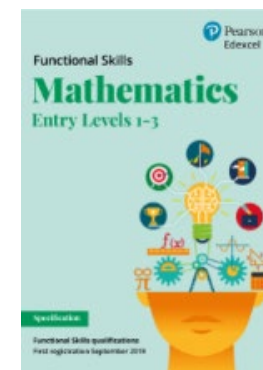
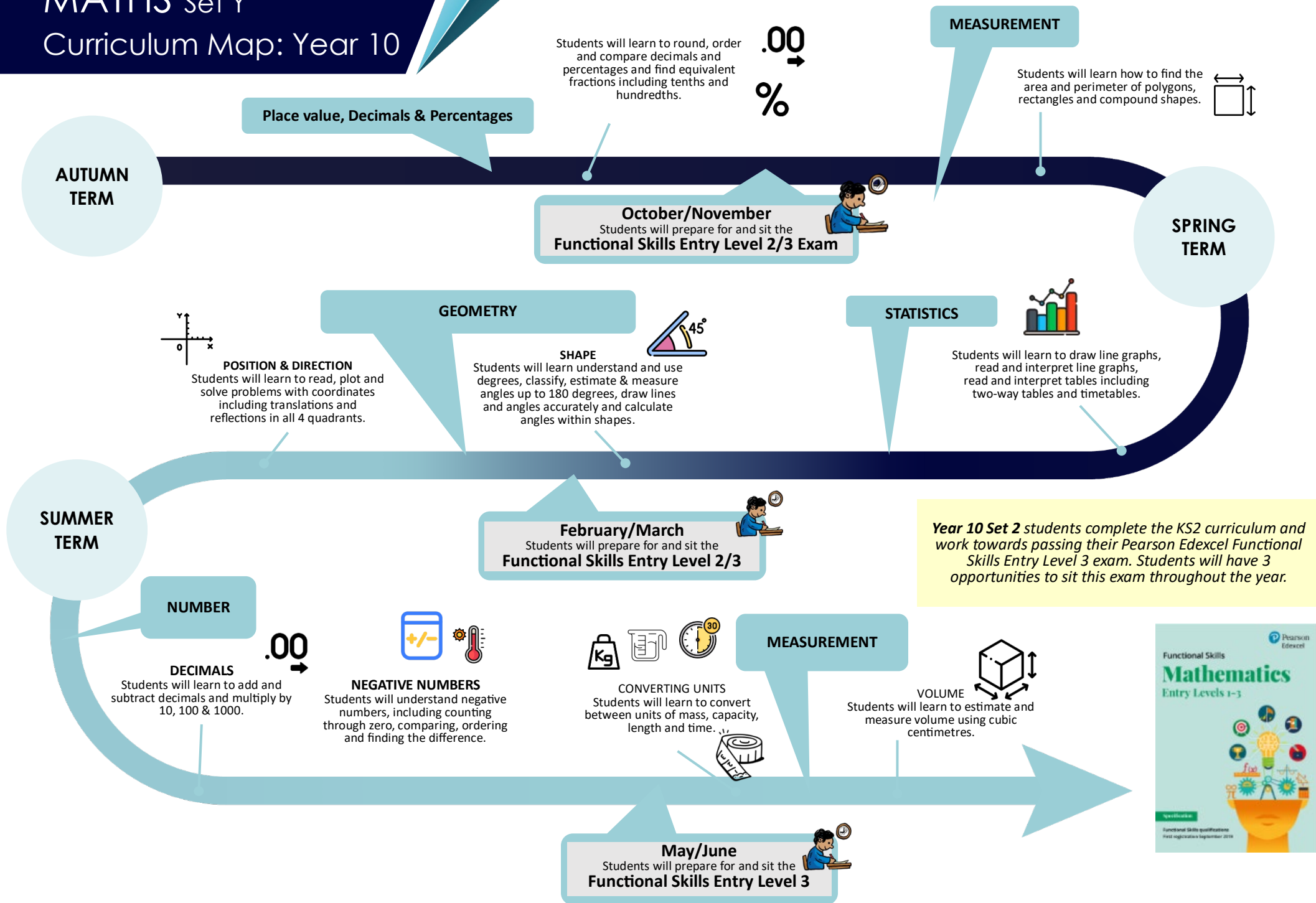
MATHS Set X

Curriculum Map: Year 10



MATHS Set Y

Curriculum Map: Year 10



MATHS Set Z

Curriculum Map: Year 10

\times $+$ $-$ \div

